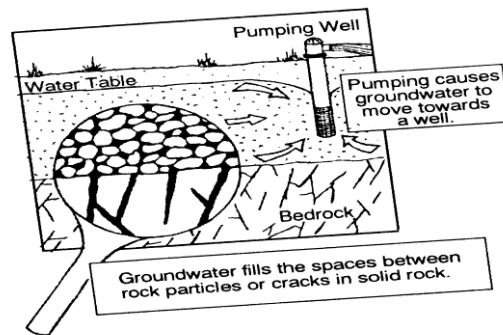




## Rural Water Words

N Y O N O J Z D G A I R A R W J F B I J  
N O I T U B I R T S I D S E Y V W A M V  
H T I V D M L N L A S N L T Y T C S U  
Y R E T A W A A W L O L B A I S V K T F  
D B D C C R X R R I S X G W L Z T F E G  
R C B G D E N D T U V C W D A N Q L F C  
A M E Y N S F A P X R B Q N U G X O L F  
N S H P K I R N R V V G C U Q R M W L F  
T I C S M E L I I Z B O D O O W C U G U  
R S F B P Y R L N S N J X R X R O Z L J  
W F X O E V G R I T I Z K G P R A C L S  
S E C U R I T Y A B A D C U I Z N N C L  
E A D U E T E M U A C K R D M E T E R S  
Z O N R Z D I E Q B E B E R E F I U Q A  
R Z K C I N D A G U E L E V R E S N O C  
X V C O A N S C J P F G C M J X G H H D  
T N K T V C K P I Q A V W Y E Y X J I Z  
F G I J Z D B I R H S W B D C B P P L F  
A O S W U F Y I N E N O I T C E T O R P  
N A Q M I I R W E G A D E K J M R G A C

|              |               |
|--------------|---------------|
| AQUIFER      | HYDRANT       |
| INTAKE       | METERS        |
| CONSERVE     | OPERATIONS    |
| QUALITY      | RURAL         |
| SAFE         | FLUORIDE      |
| SECURITY     | WATER         |
| WELLS        | BACKFLOW      |
| BILLING      | CONTAMINATION |
| DISINFECTION | DISTRIBUTION  |
| DRINKING     | GROUNDWATER   |
| PROTECTION   | RECYCLE       |



Created by the Michigan Rural Water Association

## Water Wisdom

*How much do you know?*

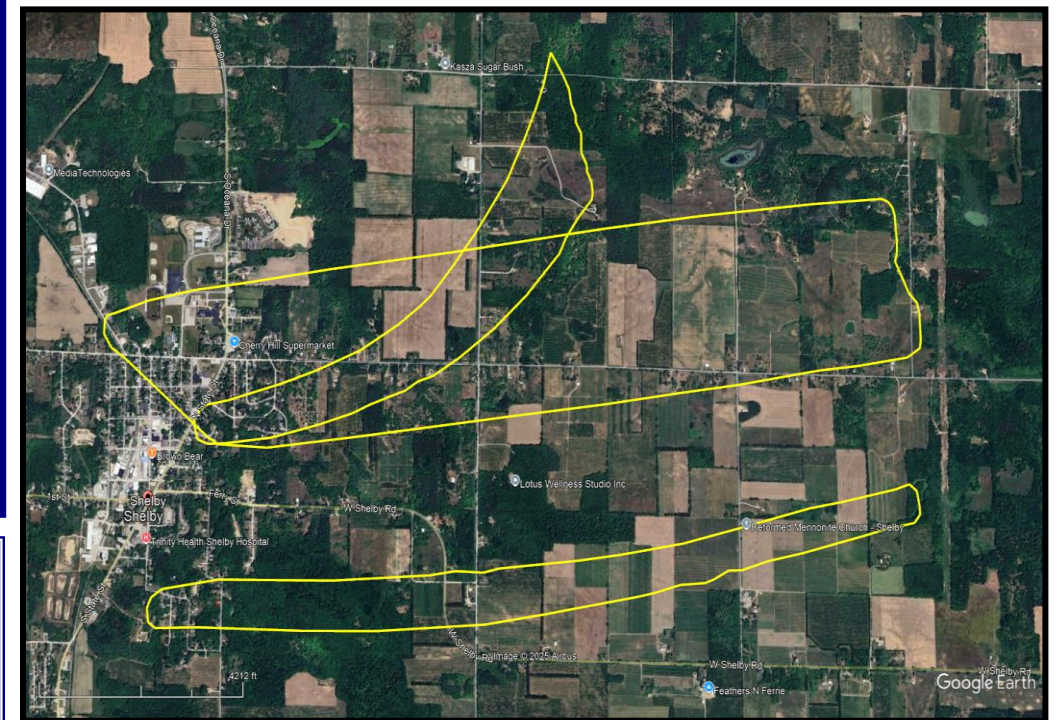
- In the Village of Shelby and Shelby Township, what percentage of residents depend on groundwater for their drinking water source?  
a. 20%      b. 50%      c. 100%      d. none of the above
- Groundwater is stored in underground formations known as aquifers. A groundwater aquifer is most like:  
a. an underground lake      b. an underground river  
c. an underground sponge      d. none of the above
- Groundwater is especially susceptible to contamination because:  
a. It moves slowly and once contaminants enter, they may be there a long time  
b. It is very cold, acting as a contaminant preserver  
c. It is low in oxygen, causing slow biological and chemical activity and breakdown  
d. All the above
- Sources of groundwater contamination include:  
a. Leaking Underground Storage Tanks  
b. Improperly installed or malfunctioning septic tanks  
c. Unlined industrial waste pits, ponds or lagoons  
d. All the above
- How much water does the average household use in a month?  
a. 3000—4000 gallons      b. 4000—5000 gallons  
c. 5000—6000 gallons      d. 6000—7000 gallons
- How much water is used when you flush the toilet?  
a. 1—3 gallons      b. 4—7 gallons  
c. 8—11 gallons      d. 12—15 gallons
- Which of the following household activities uses the most water?  
a. lawn watering      b. washing clothes  
c. bathing      d. washing dishes

## PROTECT YOUR DRINKING WATER

- Properly plug abandoned wells on your property.
- Be aware of dangerous household hazardous chemicals and never dump them directly on the ground.
- Consider alternatives to household products that contain hazardous chemicals.
- Participate in a Household Hazardous Waste Disposal Day through the Oceana Conservation District. Visit <https://www.oceanaconservation.org/household-hazardous-waste>
- Recycle used motor oil, brake and transmission fluid. Many service stations will accept used oil.
- Pick up and dispose of animal waste.
- Follow instructions and soil test recommendations when using pesticides and fertilizers. Over-application is harmful.
- If you have a private well, test your water annually.
- If you have a septic system, have it checked every other year to ensure that it is functioning properly. Septic systems should be pumped every 3 years.
- Get involved in the Shelby Source Water Protection Program and inform the Village or Township of potential sources of contamination.

## Shelby Drinking Water Protection Program

The Village of Shelby owns and operates their own drinking water system and provides groundwater to area residents and businesses with their four pumping wells. The Village has adopted a Source Water Protection Program that identifies drinking water protection areas. These areas extend into Shelby Township and at the edge of each area, a contaminant would take ten years to reach the Village's water supply system. It is important to protect these areas through land use planning, contamination prevention and education. For more information, please call the Village of Shelby at 231-861-4400 or Shelby Township at 231-861-5853. Or, to learn how you can help, visit the website at <https://www.shelbytownshipoceana.com>.



**Village of Shelby Wellhead Protection Areas**

### Water Wisdom Answer Key

- C – 100% of the Village of Shelby and Shelby Township residents depend solely on groundwater for their drinking water supply.
- C – An aquifer is a soil formation capable of absorbing and storing water.
- D – All of the reasons listed make groundwater vulnerable to contamination and extremely difficult and expensive to clean once polluted. It is very important to keep groundwater free from contamination.
- D – All of these sources are potential contaminants. The types of contaminants from these sources will vary. Septic tanks may leach bacteria and detergent while industrial holding ponds may leach heavy metals, radioactive wastes and other industrial chemicals.
- C – We sometimes drink, launder, cook, clean and shower our way through many more gallons of water than this!
- B – Some toilets are made to use less water while improperly working toilets may use many more gallons of water in a day.
- A – Watering lawns uses a tremendous amount of water. When drought occurs, people are restricted from watering lawns and gardens.