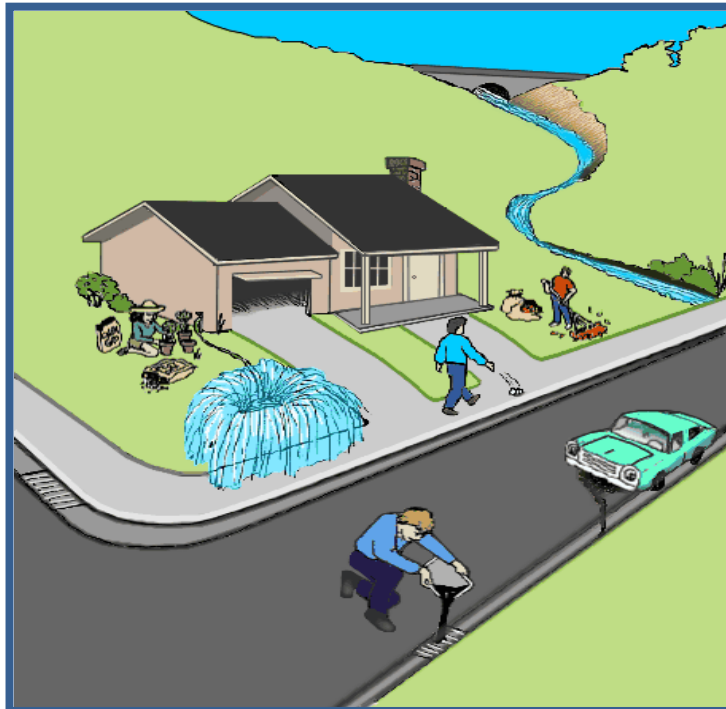
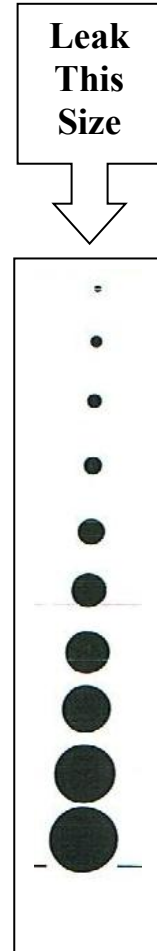




What's wrong in this picture?



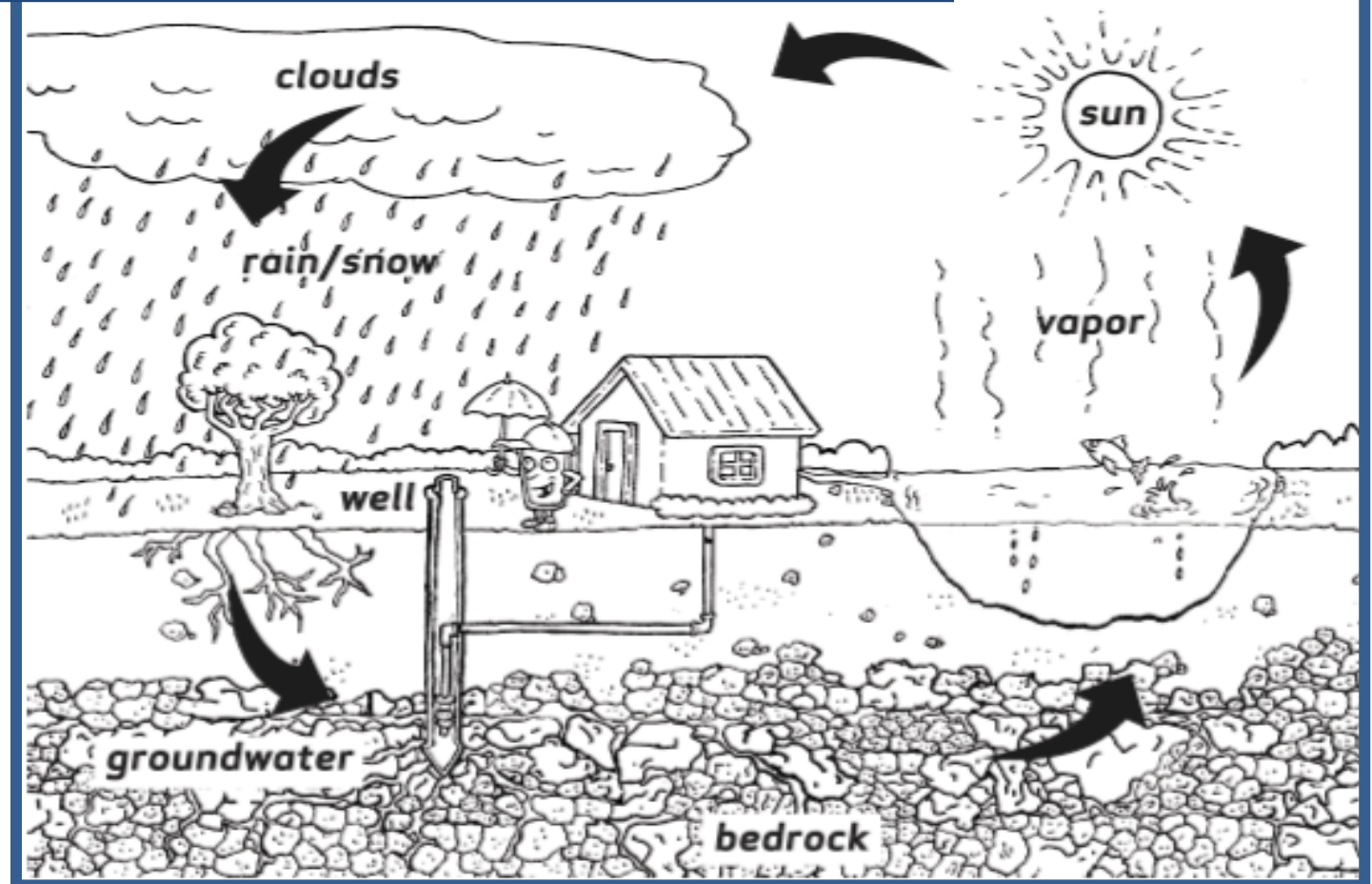
The people above are taking care of their home and car, but they are doing many things that can damage the environment, especially our water. Circle the spots where you think someone is doing something wrong.



Water Loss in Gallons		Annual Loss in Dollars (at \$5.00 per 1,000-gallon rate)
Per Day	Per Month	
185	5,550	333
735	22,050	1,323
1,655	49,550	2,979
2,945	88,350	5,301
6,620	198,600	11,916
11,770	353,100	21,185
18,395	551,850	33,111
26,485	794,550	47,673
36,050	1,081,500	64,890
47,090	1,412,700	84,762

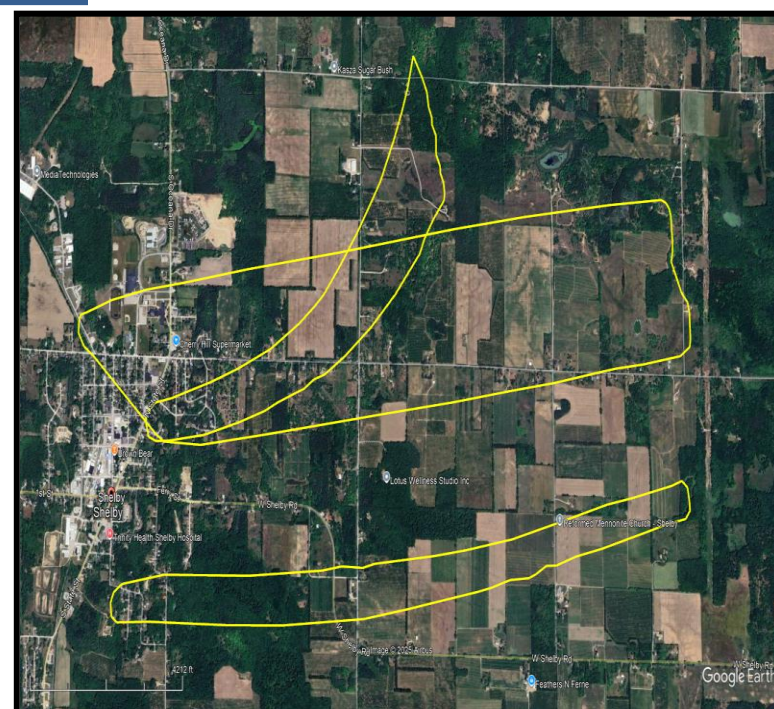
Leakage estimates based on 50psi pressure (Source: Draper Aden Associates)

Water...Water...A Continuous Cycle!



Shelby Drinking Water Protection Program

The Village of Shelby owns and operates their own drinking water system and provides groundwater to area residents and businesses with their four pumping wells. The Village has adopted a Source Water Protection Program that identifies drinking water protection areas. These areas extend into Shelby Township and at the edge of each area, a contaminant would take ten years to reach the Village's water supply system. It is important to protect these areas through land use planning, contamination prevention and education. For more information, please call the Village of Shelby at 231-861-4400 or Shelby Township at 231-861-5853. Or, to learn how you can help, visit the website at: <https://www.shelbytownshipoceana.com>.



How can you help?

- »»»» When you mow the lawn, sweep grass clippings back onto your lawn.
- »»»» Recycle!!! Recycle!!! Recycle!!! Imagine how much "stuff" is thrown into a landfill EVERY day! The more we can reuse, the less we have to "house" someplace!
- »»»» Properly plug abandoned wells on your property.
- »»»» Be aware of dangerous household hazardous chemicals and never dump them directly on the ground.
- »»»» Consider alternatives to household products that contain hazardous chemicals.
- »»»» Participate in a Household Hazardous Waste Disposal Day. Contact the local County Health Department for more information.
- »»»» Recycle used motor oil, brake and transmission fluid. Many service stations will accept used oil.
- »»»» Pick up and dispose of animal waste.
- »»»» Follow instructions and soil test recommendations when using pesticides and fertilizers. Over-application is harmful.
- »»»» If you have a private well, test your water annually.
- »»»» If you have a septic system, have it checked every three years to ensure that it is functioning properly. Septic systems should be pumped every 3 to 5 years.
- »»»» Properly dispose of pharmaceuticals by mixing them with an undesirable substance (i.e. coffee grounds) and placing them in the trash. Do NOT flush them down the drain!